

0 6

0 6

0 6

0

0 6

0 6

0

1

2

2

3

0

0

1

2

3

4

5

0

1

2

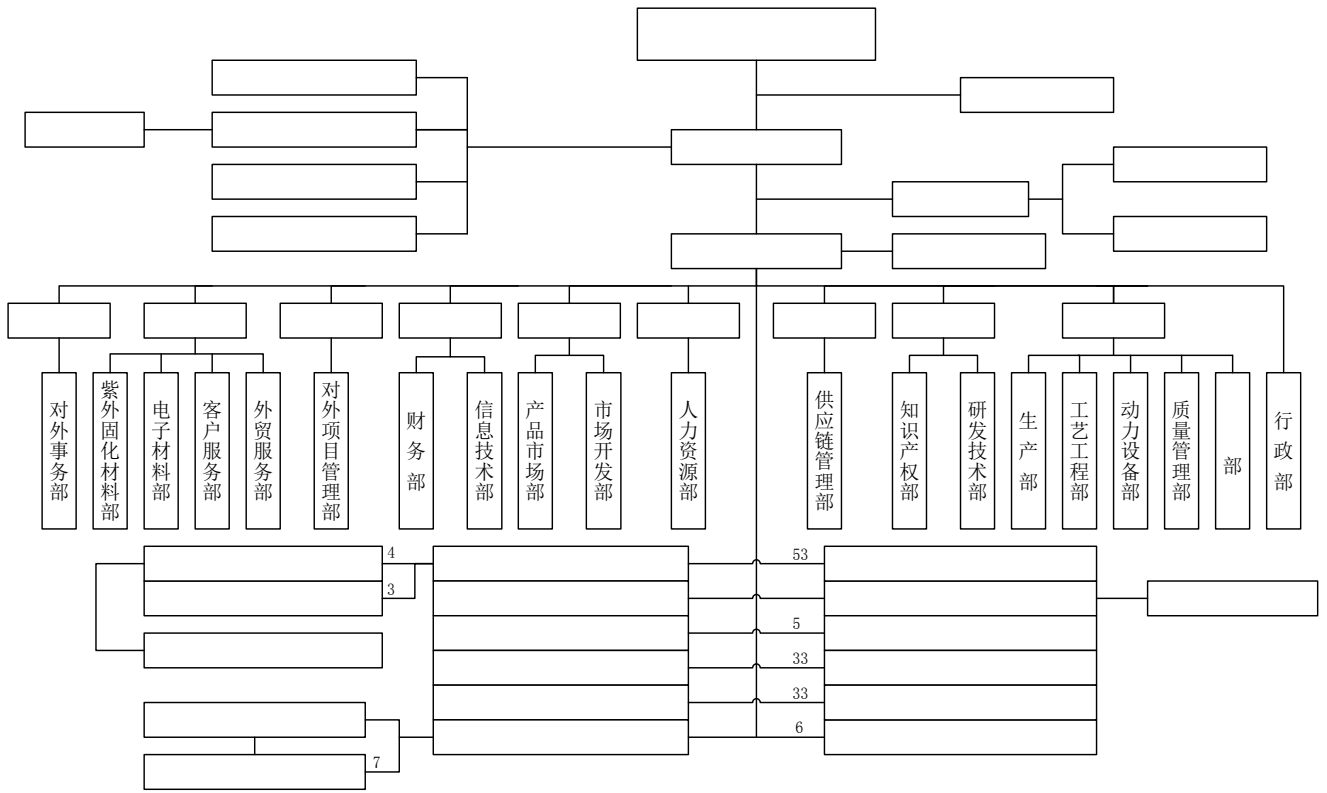
3

0

1

2

3



4

5

6

0

0

7







2

3

4

5

6

7

2

0

3

2

0 7 0 03      0 6

0 6 0 1

0

1

2

3

0 6 0 1